

# DDR MAK-1500

WE MAKE DIGITAL EASY

## All Purpose

Automatic

Ceiling-Mounted X-ray Tube

## DDR MAK-1500

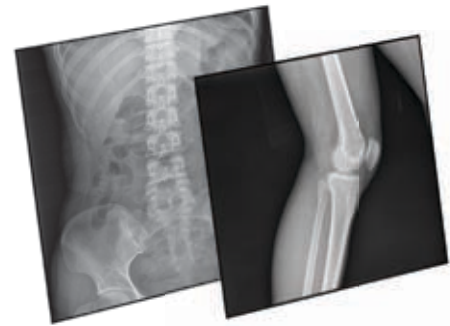
A truly flexible and multipurpose direct digital x-ray system, the DDR MAK-1500 offers a ceiling mounted x-ray tube and universal wall stand that is suitable for all varieties of examinations, including horizontal, vertical and oblique angles.

The DDR MAK-1500's versatility allows off-table radiographs of skull and spine in horizontal and vertical positions, and a variety of radiographs of patients whether standing, lying down, sitting in a wheelchair or laying on a stretcher.

Offering a large digital format, 17" x 17" (43 cm x 43 cm) true flat panel direct digital detector, the DDR MAK-1500 provides excellent image quality in a compact location.

## DDR MAK-1500 Advantages

- Ceiling Tube Suspension
- Digital display for the SID, X-ray tube angulations and indication of the position on the horizontal axis
- Digital flat panel detector
- Automatic Exposure Control (AEC)
- X-ray Generator (50 kW, 150 kVp, 640 mA) with digital interface
- X-ray Tube (150 Kvp, 300.000 HU)
- Automatic Collimator
- Universal Dual Mode floor-to-wall Bucky
- Carbon Fiber Mobile Radiographic Table



## X-ray Generator Features

- Three phase 240 / 480 VAC with a high speed starter
- Output power 50 kW (up to 80 kW optional)
- Zero point, with anatomical program APR, automatic selection of the radiographic parameters



## Ceiling Tube Suspension

- Positioning movement: 3-way movements with a motorized vertical movement
- Digital Display: digital display for the SID, X-ray tube angulations and indication of the position on the horizontal axis.
- Electromagnetic brakes for tube rotation and tube arm movements
- Motorized features: Alignment Control System of the wall Bucky Stand, through synchronized movement with the Ceiling Suspension. Once the system is activated, any vertical movement of the wall Bucky stand, the ceiling suspension will automatically follow any vertical movement of the wall Bucky to the center position of the Bucky.

## Acquisition and Post-Processing

- Selection and post-processing of organ program
- Selection of generator parameters, parameterization of the image preprocessing
- Display of image markers (L, R, etc.)
- Image processing functions: rotation, inversion, zooming, windowing, filtration, adding of annotations.
- Sending images into the network (DICOM Send)
- Automatic and manual filming (DICOM Print)
- Automatic data distribution configurable by the user

## Digital Detector

- High DQE Flat Panel Detector: 17" x 17" (43 cm x 43 cm)
- Designed for all general radiological applications



© Copyright 2011 MedicatechUSA. All Rights Reserved