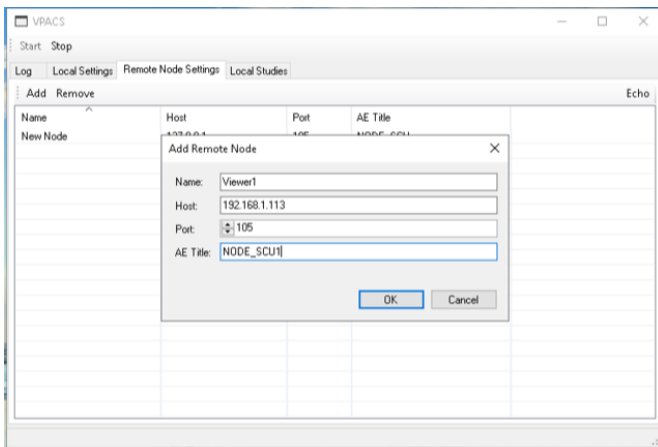
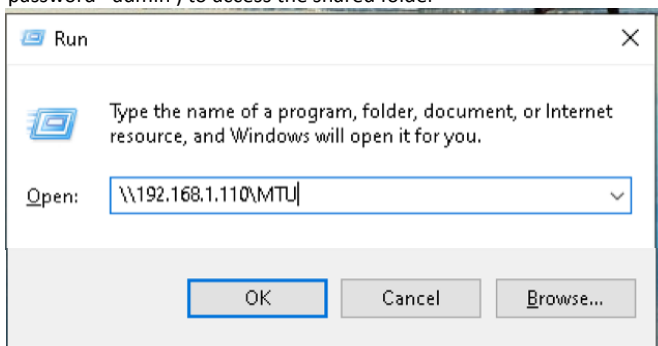


VOYANCE Viewers - instructions to activate the viewers without license key

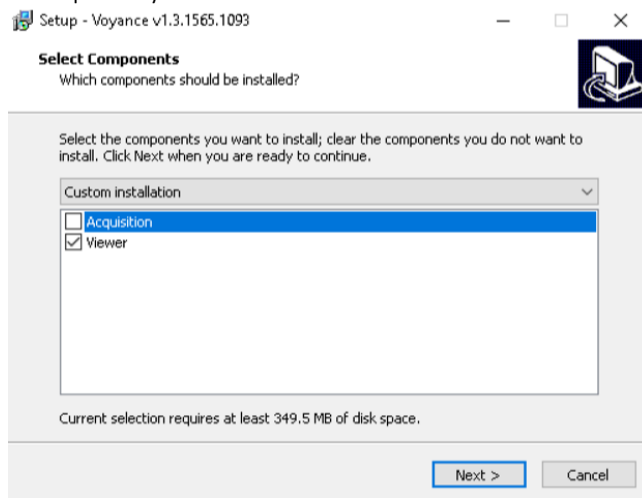
- 1- Make sure you have IP addresses set to Static on both X-Ray PC and Viewer PC
- 2- Open the Vpacs server and add the new viewer IP address under remote node setting and change the AE title to NODE_SCUX (X=number)



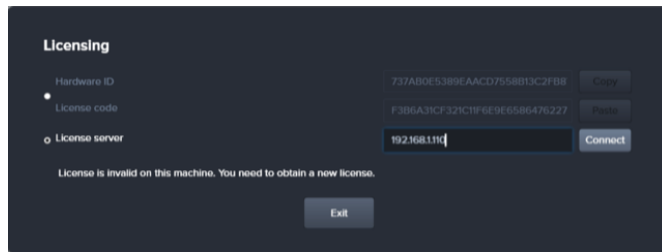
- 3- Turn off the firewall on the X-Ray PC if it didn't go through
- 4- You can download the software from our site directly (link : <http://www.medicattechusa.com/product/Voyance>) or from the viewer PC you can access the shared folder MTU located on the X-Ray PC (will need to put username = xray / password= admin) to access the shared folder



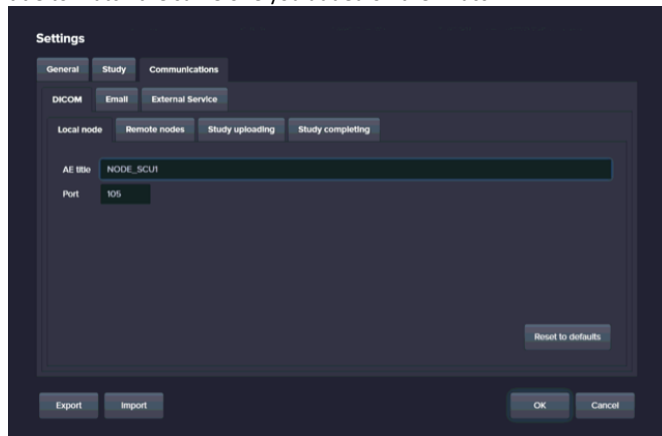
5- Setup the Voyance software and choose viewer



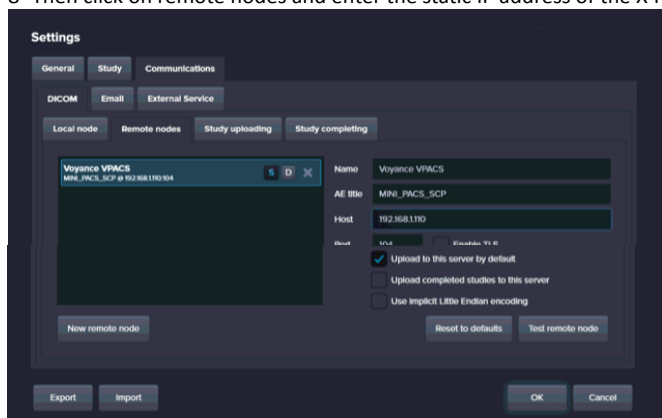
6- Run the viewer on the desktop and type the ip address of the xray pc where the Vpacs is installed then click connect or (hit TAB and then ENTER) to activate the viewer



7- When viewer is activated you will get the login screen then go to settings > communication > local node and change the AE title to match the same one you added on the VPacs



8- Then click on remote nodes and enter the static IP address of the X-Ray PC / Vpacs server then test the connection



9- Click OK when done and check the studies sent to the PACS